

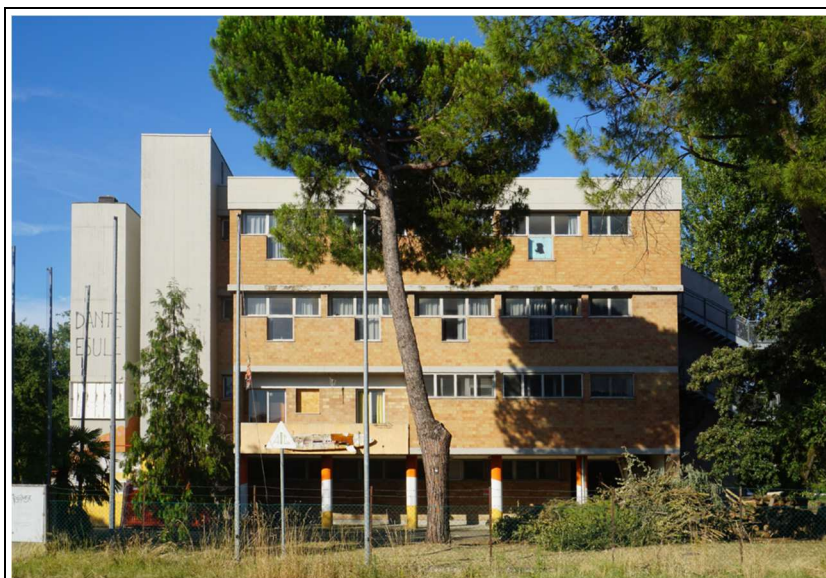


COMUNE DI RAVENNA

AREA PIANIFICAZIONE TERRITORIALE  
SERVIZIO PATRIMONIO  
*Ufficio Tecnico Immobiliare*

**OGGETTO: LAVORI DI RIMESSA IN FUNZIONE DELL'OSTELLO PER LA GIOVENTU'  
"DANTE ALIGHIERI" DI VIA NICOLODI 12 - RAVENNA  
RELAZIONE FOTOGRAFICA DELLO STATO DEI LUOGHI**

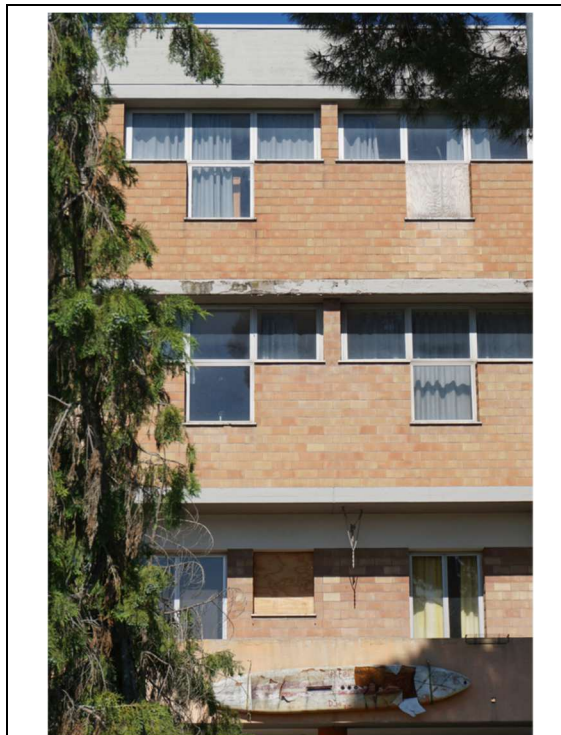
## FOTOGRAFIE DA ESTERNO



01. Fronte su Via Nicolodi



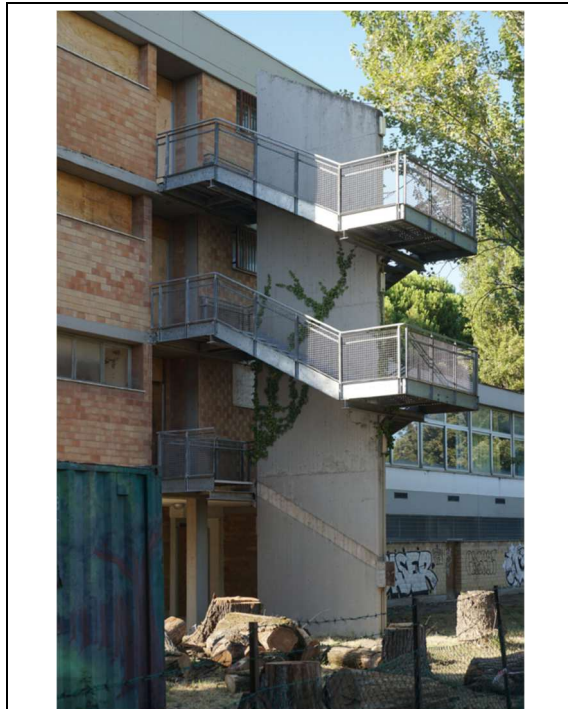
02. Ingresso su Via Nicolodi



03. Fronte su Via Nicolodi



04. Fronte su Via Nicolodi



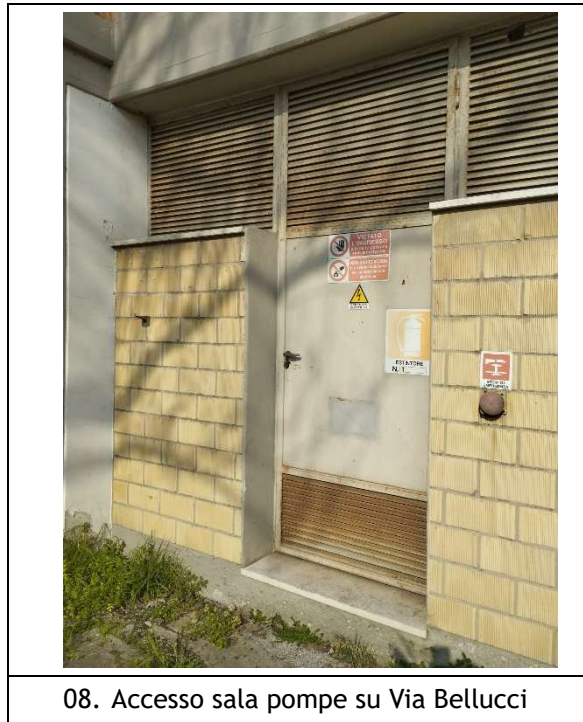
05. Scala esterna



06. Scala esterna su Via Bellucci

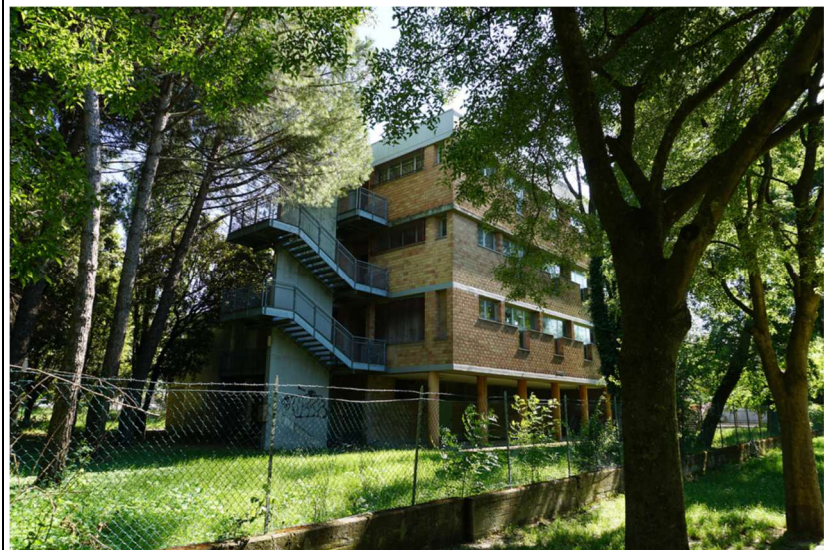


07. Fronte su Via Bellucci

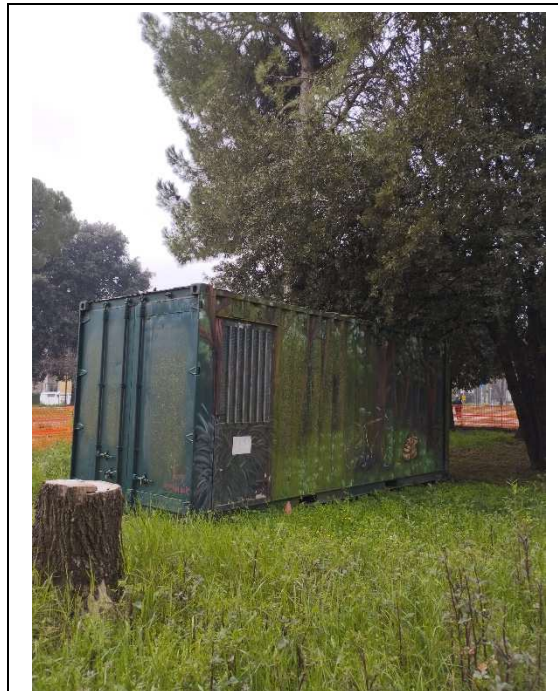




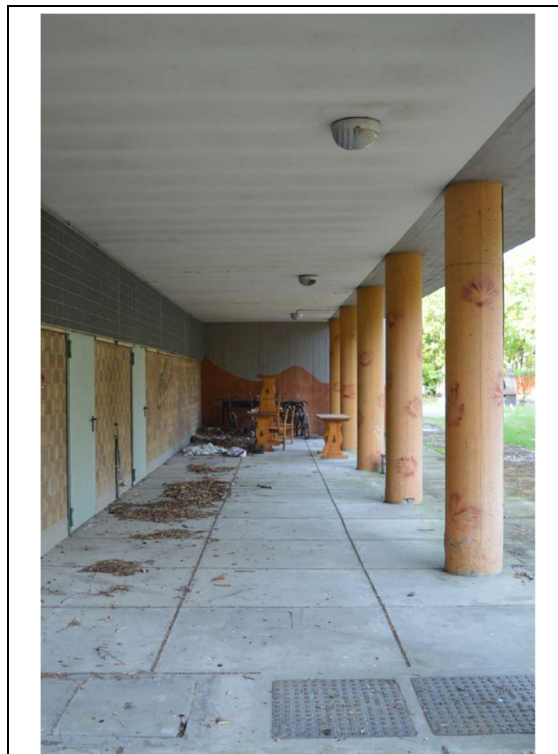
10. Fronte sul giardino



11. Fronte sul Parco Manifiorite



12. Container esterno



13. Porticato

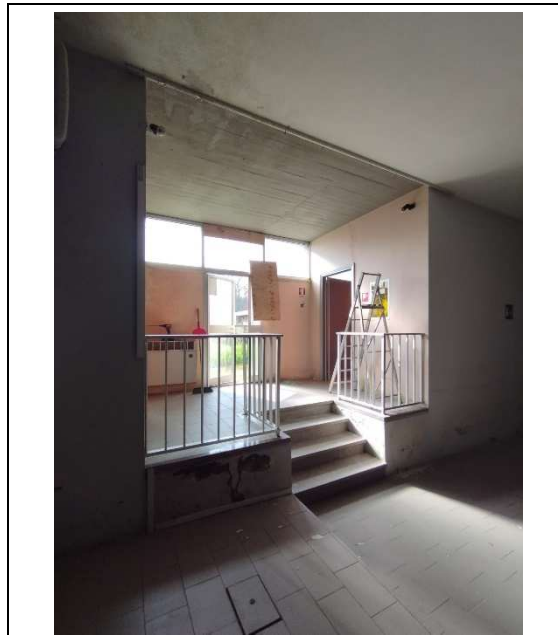


14. Fronte sul Parco Manifiorite



15. Passerelle

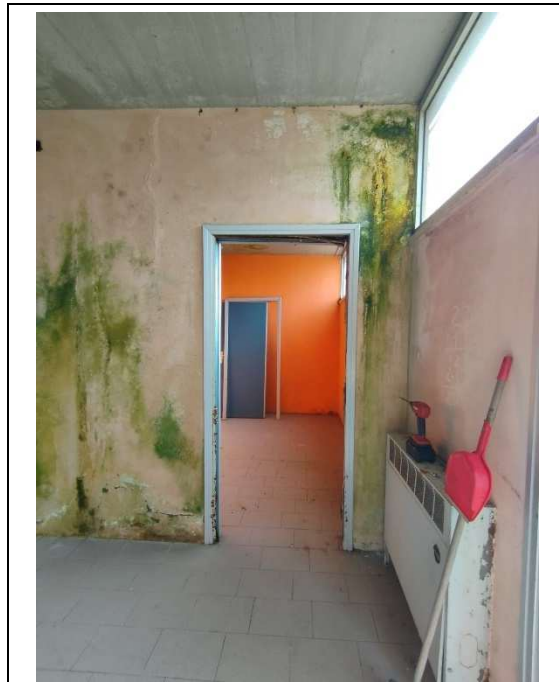
# PIANO TERRA



16. Ingresso Piano Terra su Via Bellucci



17. Sala Riunioni



18. Ripostiglio



19. WC Handicap (sala riunioni)



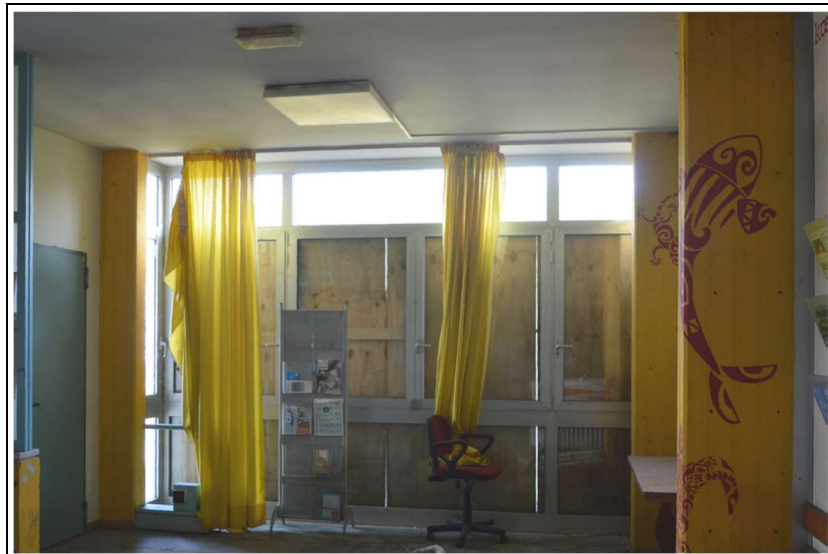
20. Ala verso Parco Manifiorite



21. Corridoio ala verso Parco Manifiorite



# PIANO PRIMO



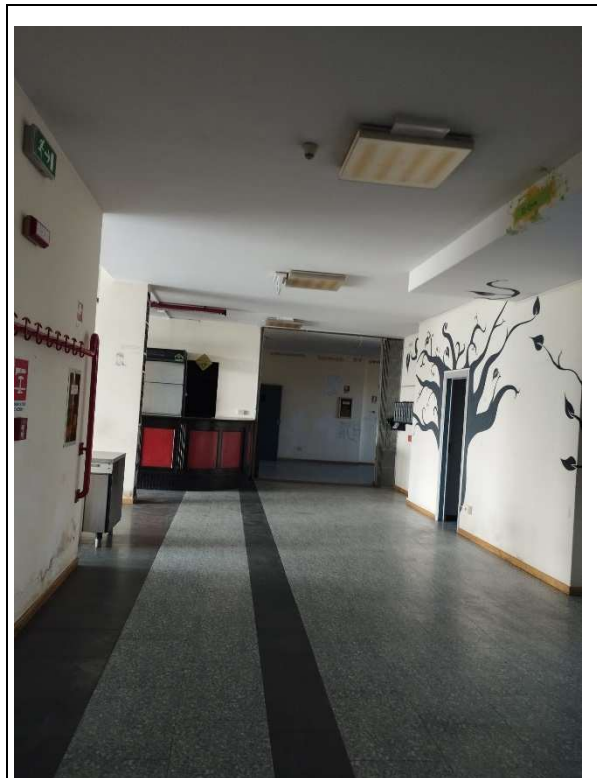
24. Ingresso



25. Disimpegno verso sala ristorante



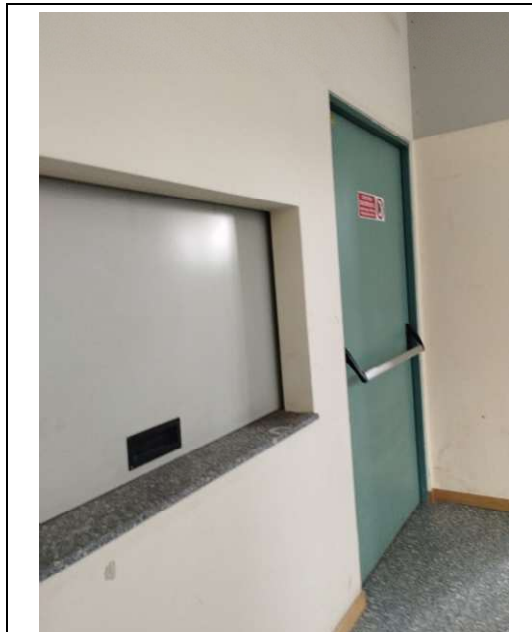
26. Sala ristorante



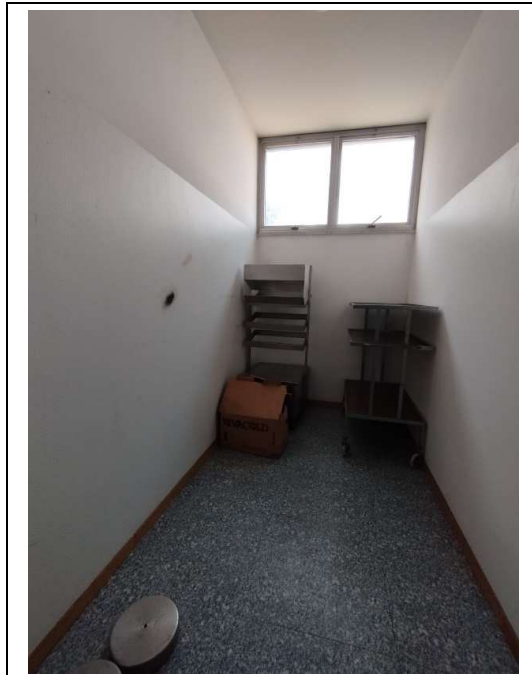
27. Disimpegno verso sala ristorante



28. Cucina



29. Passavivande



30. Deposito



31. Camera appartamento custode



32. Bagno appartamento custode



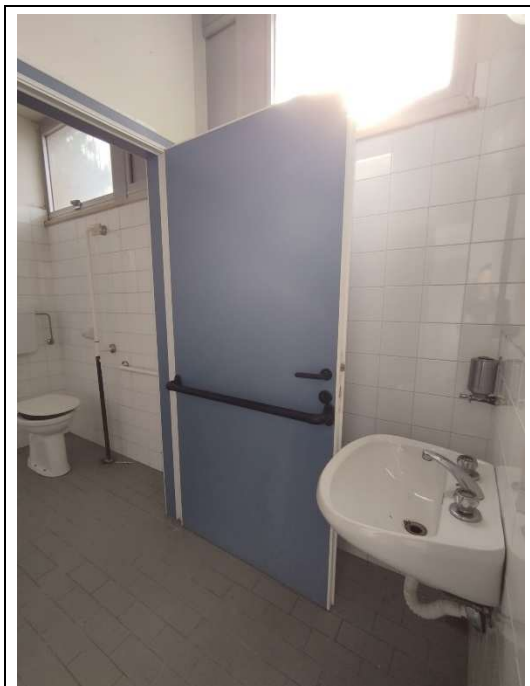
33. Ripostiglio appartamento custode



34. Sala lettura



35. Sala relax

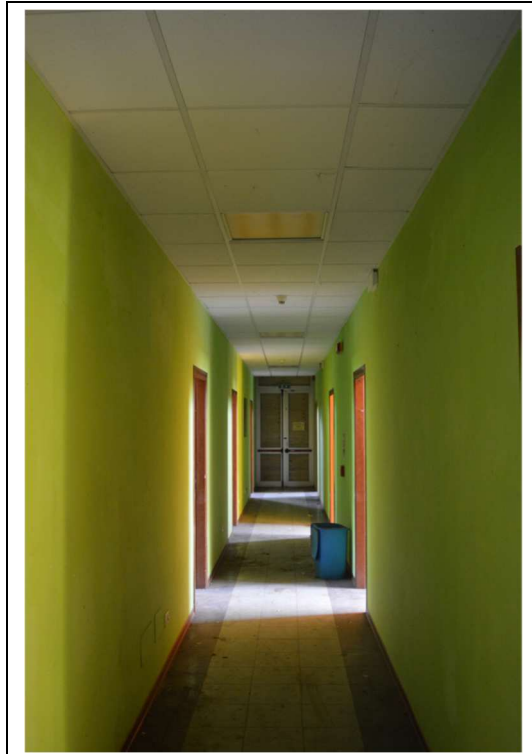


36. Antibagno e WC Handicap

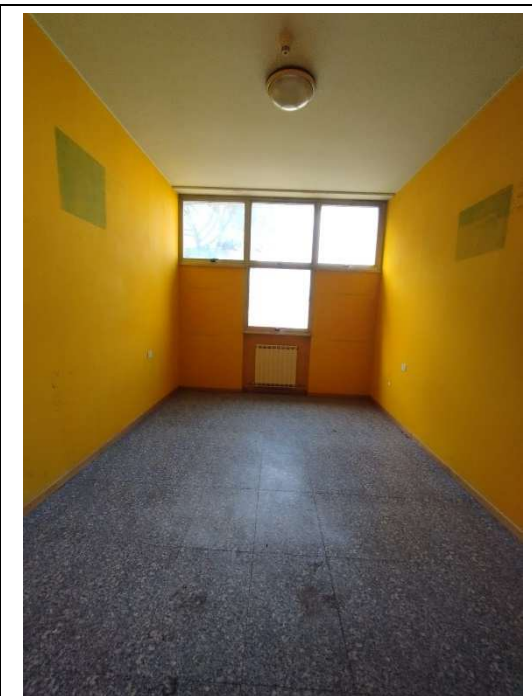


37. Antibagno e WC

## **SECONDO PIANO**



38. Corridoio camere



39. Camera tipo 1



40. Camera tipo 2



41. Wc privato tipo



42. Camera accompagnatore

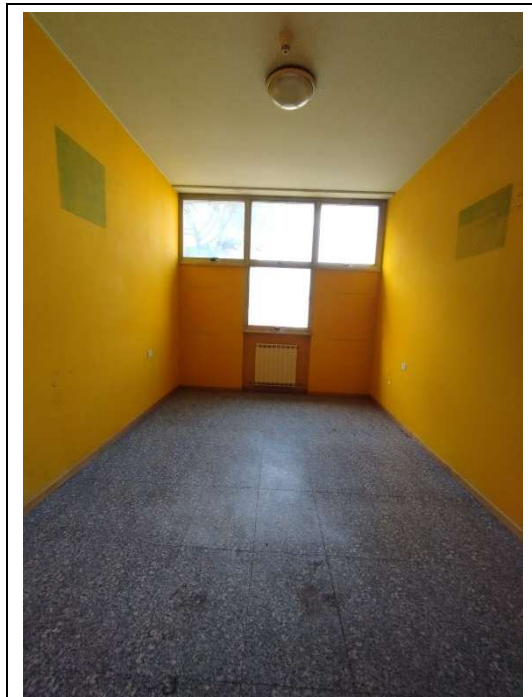


43. Wc privato camera  
accompagnatore



44. Docce

# TERZO PIANO



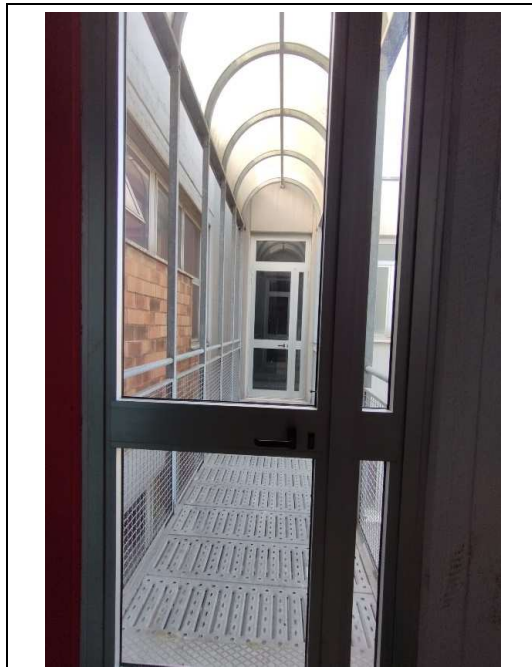
45. Camera tipo 1



46. Camera tipo 2



47. Wc privato



48. Passerella esterna di collegamento